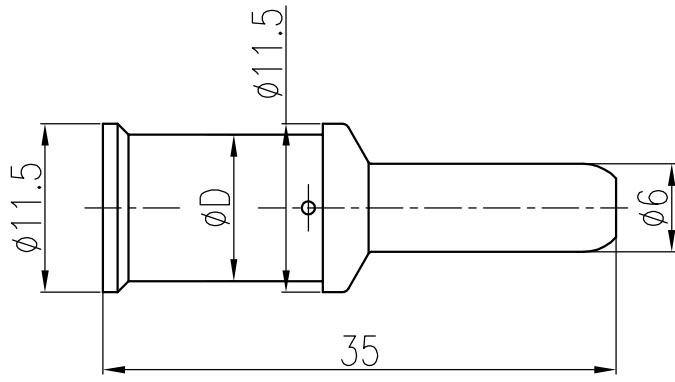
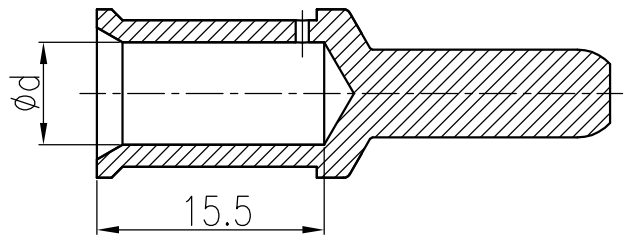


| 日期/Date           | 档案员<br>Filing Clerk | 1               | 2   | 3   | 4   | 5                        | 6              |
|-------------------|---------------------|-----------------|-----|-----|-----|--------------------------|----------------|
| 产品代号<br>Part code | 产品料号<br>Part NO.    | 线径/Wire Gauge   |     | d   | D   | 剥线长度<br>Stripping length | 重量/Weight<br>g |
|                   |                     | mm <sup>2</sup> | AWG |     |     |                          |                |
| CKSM70-6          | 1010341101301       | 1.5             | 16  | 3.5 | 5   | 15.5                     | 10             |
| CKSM70-10         | 1010341101401       | 2.5             | 14  | 4.3 | 5.6 | 15.5                     | 9              |
| CKSM70-16         | 1010341101501       | 4               | 12  | 5.5 | 8.5 | 15.5                     | 10.6           |

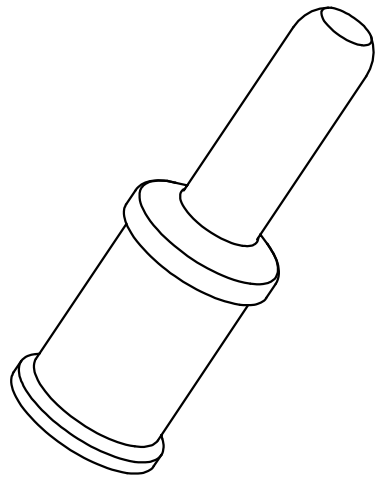


技术参数:

- 材料: 铜合金
- 表面处理: 镀银
- 额定电流: 70A
- 接触电阻:  $\leq 0.5m\Omega$
- 线径范围: 6-16mm<sup>2</sup>
- 可插拔次数:  $\geq 500$
- 电缆绞线标准: IEC 60228-5

Technical specification:

- Material: copper alloy
- Surface: hard-silver plated
- Rated current: 70A
- Contact resistance:  $\leq 0.5m\Omega$
- Wire gauge: 6-16mm<sup>2</sup>
- Mating cycles:  $\geq 500$
- For stranded fine wire acc. to: IEC 60228-5



|               |              |                  |                |         |                 |                |            |   |            |  |                   |                  |
|---------------|--------------|------------------|----------------|---------|-----------------|----------------|------------|---|------------|--|-------------------|------------------|
|               |              |                  |                |         |                 | 表面处理<br>Finish | -          |   |            |  | 图号<br>Drawing No. | -                |
|               |              |                  |                |         |                 | 材料<br>Material | -          |   |            |  | 产品代号<br>Part Code | CKSM70-XX        |
| 标记<br>Mark    | 处数<br>Number | 变更描述/Description |                |         | 签名<br>Signature |                | 日期<br>Date |   |            |  |                   | 产品料号<br>Part No. |
|               | 姓名/Name      | 日期/Date          |                | 姓名/Name | 日期/Date         | 比例<br>Scale    | 版本<br>REV. | 重量<br>Weight                                  | 数量<br>Qty. | 产品名称<br>Part Name                                  |                   |                  |
| 绘图<br>Drawn   | BQ LUO       | 18.10.2010       | 标准化<br>Stand.  | -       | -               | 2:1            | V1.0       | -   | -          | -  |                   |                  |
| 审核<br>Checked | P RAO        | 18.10.2010       |                |         |                 |                |            |   |            | -  |                   |                  |
| 工艺<br>Process | -            | -                | 批准<br>Approved | YY LIN  | 18.10.2010      |                |            | All Dimensions in mm<br>Original Size DIN A 4 |            | <b>厦门唯恩电气有限公司</b><br>XIAMEN WAIN ELECTRICAL CO.LTD |                   |                  |