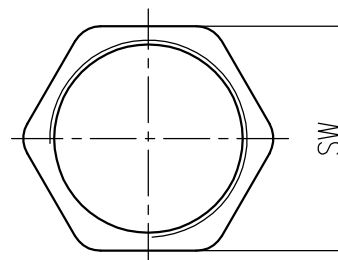
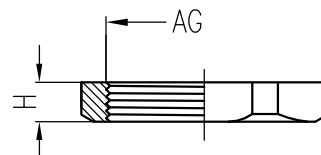
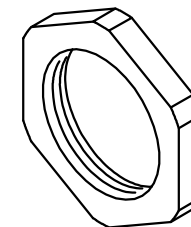


| | |
|---------|---------------------|
| 日期/Date | 档案员 Filing Clerk |
|---------|---------------------|

| M公制螺纹/Metric Thread | | | | | | |
|---------------------|-------------------|------------------|-----------------------|-----------------------|------------------|----------------|
| 序号 No. | 产品名称 Part code | 产品料号 Part NO. | 螺纹规格AG Thread size | 扳手尺寸SW Wrench size | 厚度H Thickness | 重量/Weight g |
| 1 | WNA-M12/S | 1021050111101 | M12*1.5 | 15 | 2.8 | 2 |
| 2 | WNA-M16/S | 1021050131101 | M16*1.5 | 18 | 2.8 | 2.1 |
| 3 | WNA-M20/S | 1021050151101 | M20*1.5 | 22 | 3 | 2.8 |
| 4 | WNA-M22/S | 1021050161101 | M22*1.5 | 24 | 3 | 3.2 |
| 5 | WNA-M25/S | 1021050181101 | M25*1.5 | 27 | 3 | 4 |
| 6 | WNA-M32/S | 1021050191101 | M32*1.5 | 35 | 3.5 | 8 |
| 7 | WNA-M40/S | 1021050201101 | M40*1.5 | 50 | 4.5 | 34.4 |
| 8 | WNA-M50/S | 1021050461101 | M50*1.5 | 57 | 5 | 34.2 |
| 9 | WNA-M63/S | 1021050481101 | M63*1.5 | 70 | 5.5 | 52.1 |

| PG制螺纹/PG Thread | | | | | | |
|-----------------|-------------------|------------------|-----------------------|-----------------------|------------------|----------------|
| 序号 No. | 产品名称 Part code | 产品料号 Part NO. | 螺纹规格AG Thread size | 扳手尺寸SW Wrench size | 厚度H Thickness | 重量/Weight g |
| 1 | WNA-PG7/S | 1021050011101 | PG7 | 15 | 2.8 | 2 |
| 2 | WNA-PG9/S | 1021050021101 | PG9 | 18 | 2.8 | 2.4 |
| 3 | WNA-PG11/S | 1021050031101 | PG11 | 21 | 3 | 2.8 |
| 4 | WNA-PG13.5/S | 1021050041101 | PG13.5 | 22 | 3 | 4 |
| 5 | WNA-PG16/S | 1021050051101 | PG16 | 24 | 3 | 3.8 |
| 6 | WNA-PG21/S | 1021050061101 | PG21 | 30 | 3.5 | 4.5 |
| 7 | WNA-PG29/S | 1021050071101 | PG29 | 40 | 4 | 14 |
| 8 | WNA-PG36/S | 1021050081101 | PG36 | 50 | 4.5 | 16 |
| 9 | WNA-PG42/S | 1021050091101 | PG42 | 57 | 5 | 21.1 |
| 10 | WNA-PG48/S | 1021050101101 | PG48 | 65 | 5.5 | 25 |



技术参数:

- 材料: 黄铜镀镍
- 温度范围: -40℃-100℃, 短时间可以达到120℃

Technical specification:

- Material: nickel-plated brass
- Temperature range: -40℃-100℃, short-term 120℃

| | | | | | | | | | | | | | |
|---------------|--|--------------|--|------------------|--|-----------------|--|------------|--|-------------------|--|---|--|
| | | | | | | 表面处理 Finish | | - | | 图号 Drawing No. | | - | |
| | | | | | | 材料 Material | | - | | 产品代号 Part Code | | WNA-XX/S | |
| 标记 Mark | | 处数 Number | | 变更描述/Description | | 签名 Signature | | 日期 Date | | 产品料号 Part No. | | - | |
| | | 姓名/Name | | 日期/Date | | 姓名/Name | | 日期/Date | | 比例 Scale | | 版本 REV. | |
| 绘图 Drawn | | BQ LUO | | 18.10.2010 | | 标准化 Stand. | | - | | 重量 Weight | | - | |
| 审核 Checked | | P RAO | | 18.10.2010 | | | | | | 数量 Qty. | | - | |
| 工艺 Process | | - | | - | | 批准 Approved | | YY LIN | | 18.10.2010 | | All Dimensions in mm Original Size DIN A 4 | |
| | | | | | | | | | | | | 厦门唯恩电气有限公司 XIAMEN WAIN ELECTRICAL CO.LTD | |